

Mobile Storage - Manual and Rotadrive



Rotadrive Mechanically Assisted Mobile



**Environmental, economical and space-saving.
EnviroSpec Verified.**

Lundia Mobile storage systems are a practical, space-saving and adjustable storage solution that's ideal for a range of environments. From educational facilities, government departments and commercial fit-outs to retail outlets, hospital and libraries, Lundia mobile shelving can be tailored to suit any space, décor, design and storage need. Lundia mobile units can be customised to maximise available space and optimise your floor plan.

Lundia Mobile storage systems are built from plantation-grown, sustainably harvested radiata pine, with the option of eco-friendly lacquer alternatives.

This means they're not only space saving and practical, they're also an environmentally responsible storage solution.

Specifying Lundia Mobile Shelving units in natural timber finish with Melteca ends is a green star choice.

These finishes are verified by EnviroSpec. When you specify these products and finishes for your interior fit-out projects, or Educational fit-out projects they contribute towards a green star rating.



Technical Information

- Manual or rotadrive (mechanically assisted) carriage options
 - No nuts and bolts
 - Fully adjustable and relocatable
 - Each system is created to your space and design requirements
 - All shelves are smooth and flat on both sides with no downturn lips to obstruct items being removed
 - Shelves vertically adjustable at 50mm or optional 25mm increments
 - Shelving heights: 1829, 2100 or 2400 (+130mm for carriage).
 - Mobile systems move silently – our timber absorbs noise and will not rattle
 - Mobiles have a tracking system under each upright for greater ease of movement and load spreading
 - Solid timber construction with low embodied energy values for an environmentally friendly storage system.
-
- Solid timber construction protects files by regulating humidity, absorbing moisture and not conducting heat or electricity
 - The wheels have sealed bearings that require no maintenance
 - A shelf will carry up to 200kg with a maximum of 580kg per single shelving bay
 - A manually operated unit will carry 2500kg per carriage
 - Optional Infill flooring with front ramp
 - Exterior face panels can be customised with a wide range of materials including: Melamine or timber veneer, paint finish or UV clear lacquer, mirror, fabric, wallpaper, Perspex, glass, and company branding

A Lundia representative can advise the overall weight of your chosen Lundia mobile system to ensure it does not exceed floor-loading capacity.

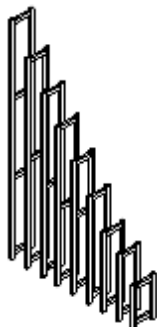


Sizes Available

Any standard shelf length can be used in any combination to make the unit length you require. ie. $600+800 = 1460$ O/A carriage length. Carriage lengths: manual 2400 (max), Rotadrive 8000 (max)
The shelf length less 30mm is available for accessing stored items

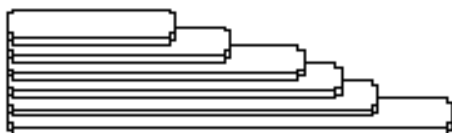
Shelf Heights (mm)

512
762
915
1220
1524
1829
2100
2400
2745



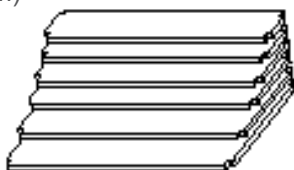
Shelf Lengths (mm)

455 600 800 900 1000 1200

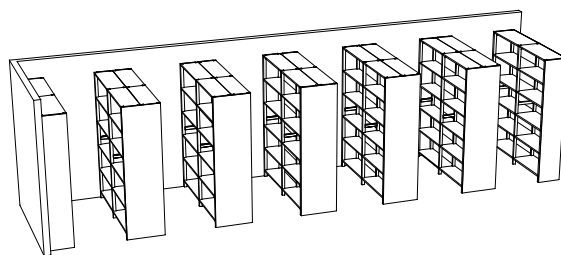


Shelf Depths (mm)

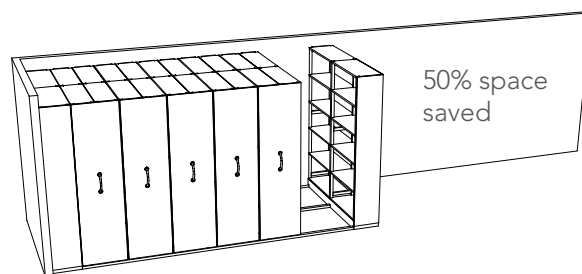
235
292
381
457
610
762



Before Lundia

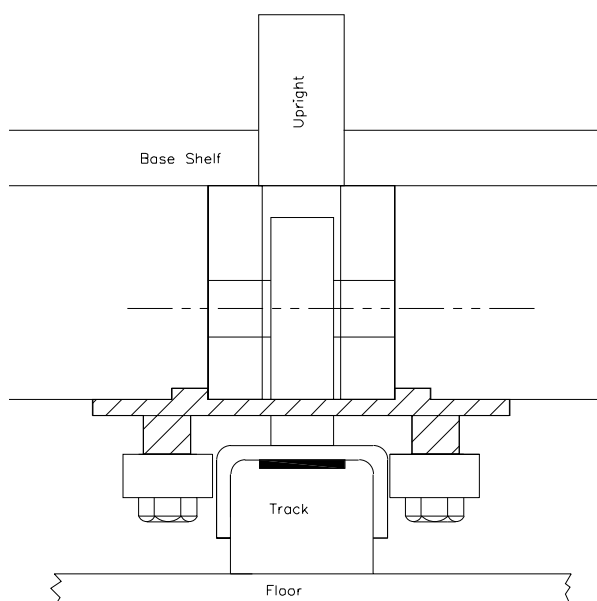


After Lundia



Mobile Track System

Lundia has a superior ball-bearing rolling and track system



0800 860 460 www.lundia.co.nz

Shelf Depths for Filing Requirements

Eastlight files

292mm-deep shelf – check height of file ie:
foolscap or A4 for shelf spacing.

Box files foolscap 385H 250D 85W

Box files A4 340H 250D 85W

Box files Standing end-on-end 292mm shelf depth.
Spacing as above, check A4 or foolscap.

Foolscap Lever Arch file 350H x 285D 85W

A4 Lever Arch file 320H x 285D 85W

Lever Arch Box files

Laying on spine or flat 381mm shelf depth. Required spacing between shelves depends on client's requirement and how many boxes high they stack when stored flat.

Colour Coded Files

381mm shelf depth required.
Check spacing with file height (usually 2100mm high with 8 shelves & storage levels 25mm drilled uprights) but we strongly recommend checking sizes.

School Journal Box

Usually 2100mm high 8 shelves
(7 Storage levels) 25mm drilled uprights). 292mm depth is usually OK, but we strongly recommend checking sizes.

Paper sizes

A4 = 210mm x 297mm

A3 = 297mm x 420mm

A2 = 420mm x 594mm

A1 = 594mm x 841mm

DVD = 190mm x 130mm D

Videos (standard) = 220mm H x 140mm D

CD = 124mm H x 140mm D

